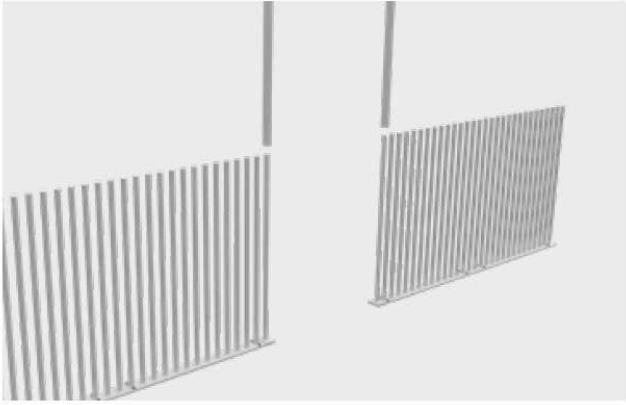
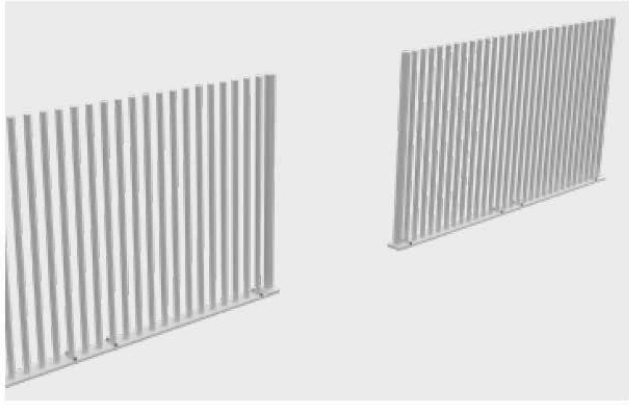


PIK GATE KIT INSTALLATION INSTRUCTIONS



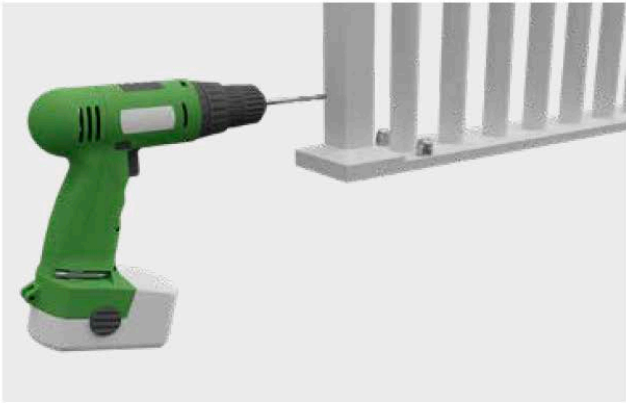
STEP 1

Sleave 40x40mm square profiles onto first and last pickets. (Ensure domical covers installed before square profiles).



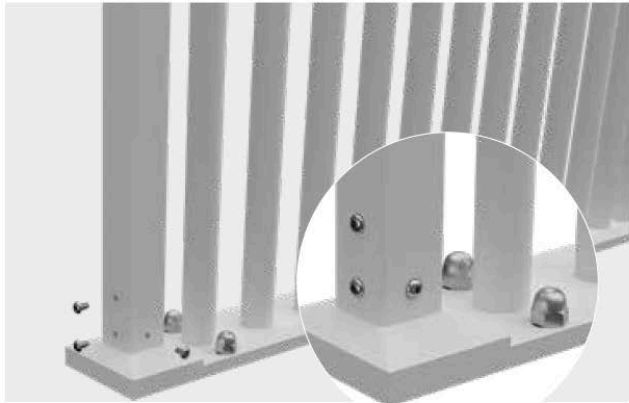
STEP 2

An opening is now created with square posts for hinging and latching of gate. ** suggest to leave a 'daylight' opening size of 1010mm (21mm hinge gap + 975mm gate + 14mm latch gap).



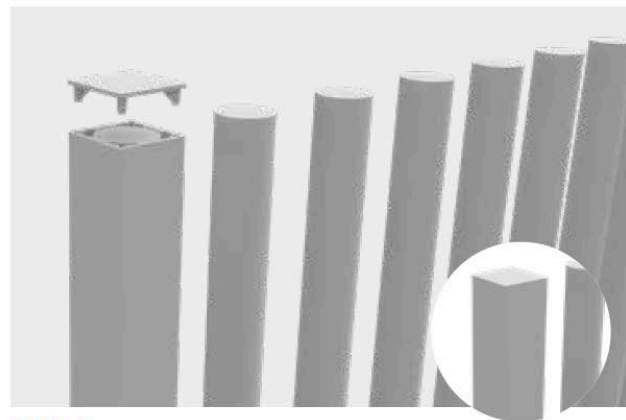
STEP 3

Use drill bit provided, drill through 40x40mm profile and 3mm wall of steel picket. Repeat for hinge and latch posts.



STEP 4

Drill 1 x hole on outer face of post and 2 x holes on inner face at bottom of post. Use self tapping screws provided and fix off screws. Repeat for hinge and latch posts.



STEP 5

Fit top cap.



STEP 6

Install gate with hinges and top pull latch. Completed.

