



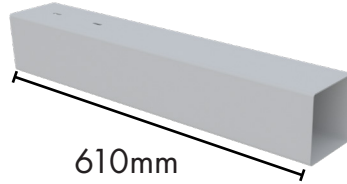
HAMPTONS LETTER BOX

FABRICATION OVERVIEW



Vertical Post

127x127x1830mm

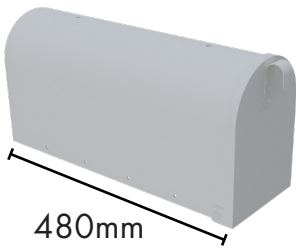


610mm

Horizontal Cross Arm



Internal Key

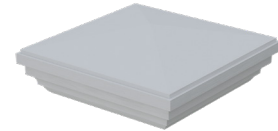


480mm

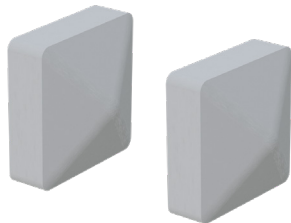
Letter Box



Mounting Board



Top Cap



Side Caps



Side Screws (x 8)



**Mounting Board
Screws (x 4)**

Applicable if not in-ground post install



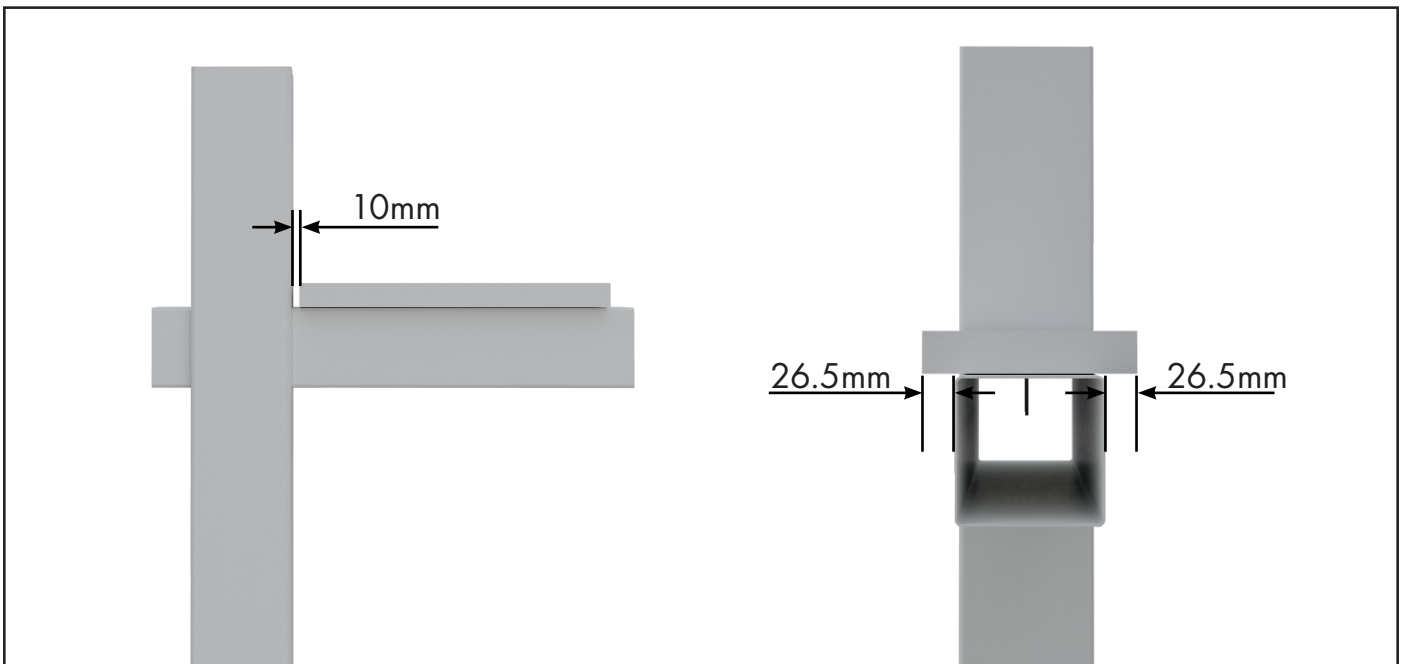
Base Plate Post



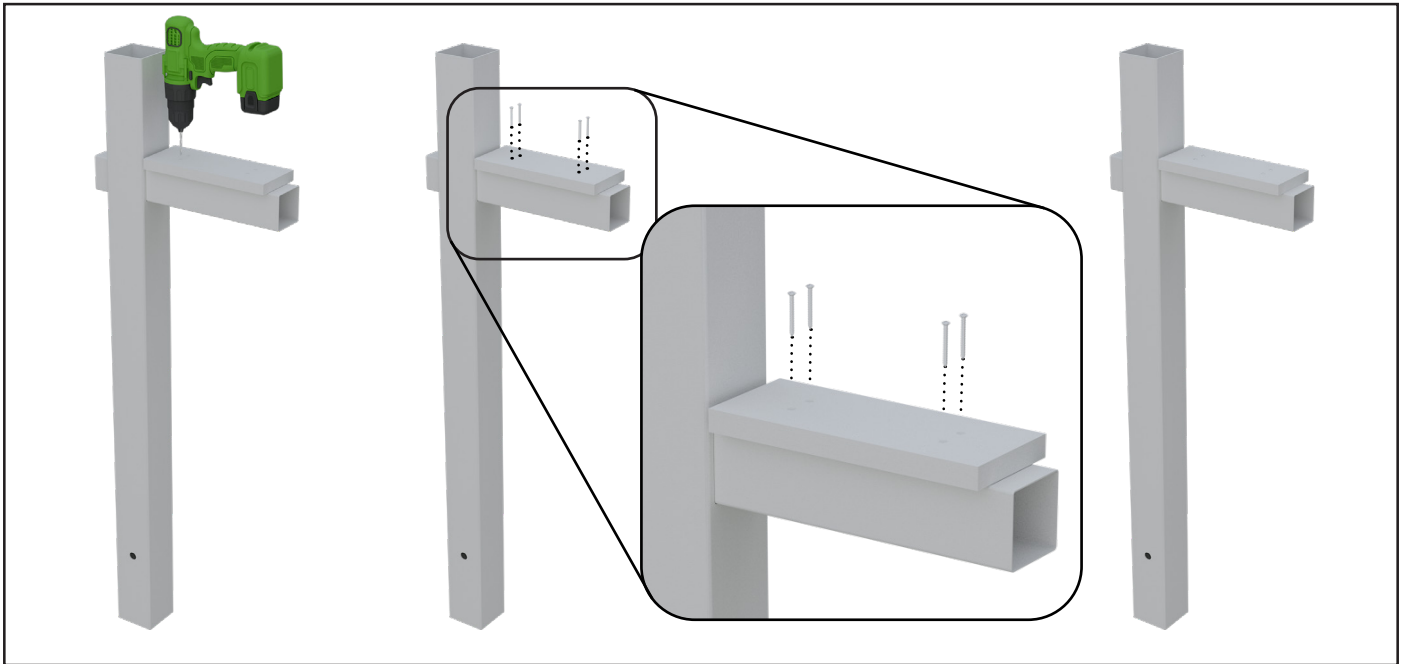
Base Plate Dress Ring



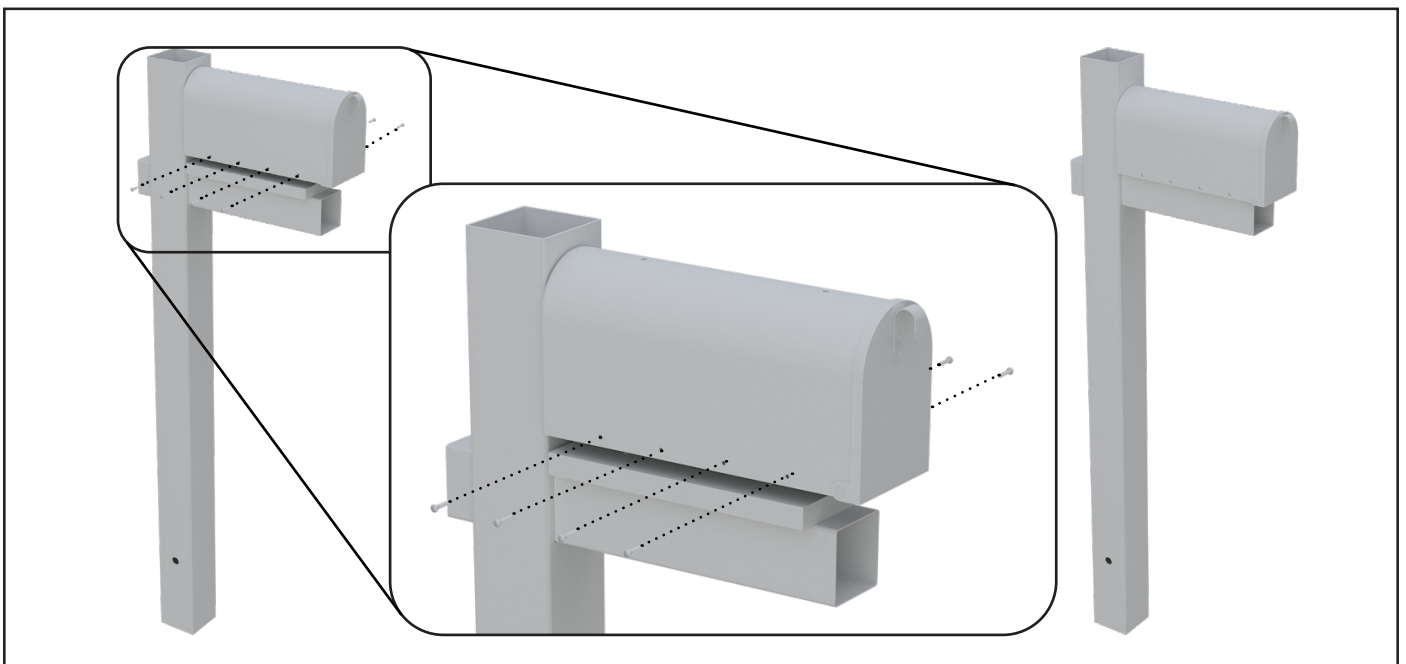
- 1 Insert Horizontal Cross Arm into slot in Vertical Post and lock into position using Internal Key by inserting from top of Vertical Post and pushing into slotted holes.



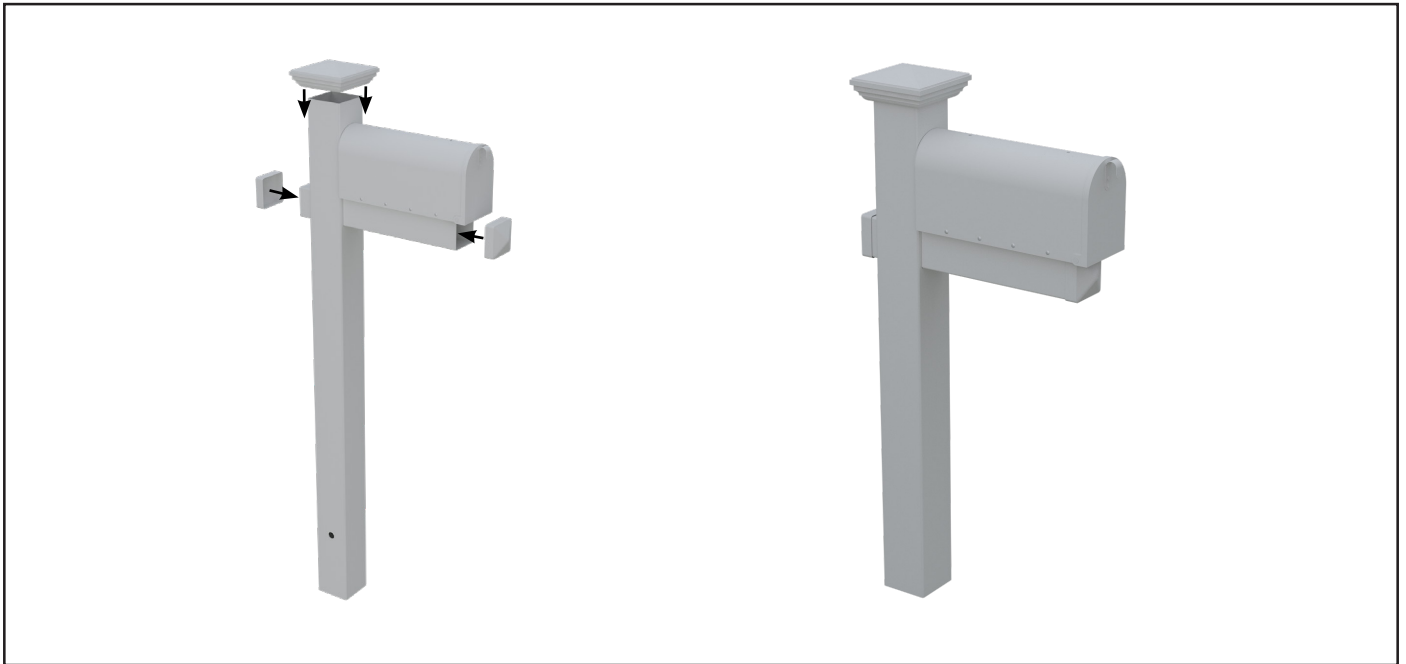
- 2 Position mounting board 10mm from Vertical Post and centrally on Horizontal Cross Arm (central position is 26.5mm from edges of Horizontal Cross Arm).



- 3** With the Mounting Board in place as a guide, drill 3mm pilot holes through Mounting Board holes into Horizontal Cross Arm.
Secure Mounting Board to Horizontal Cross arm using 4 x counter sunk screws provided.

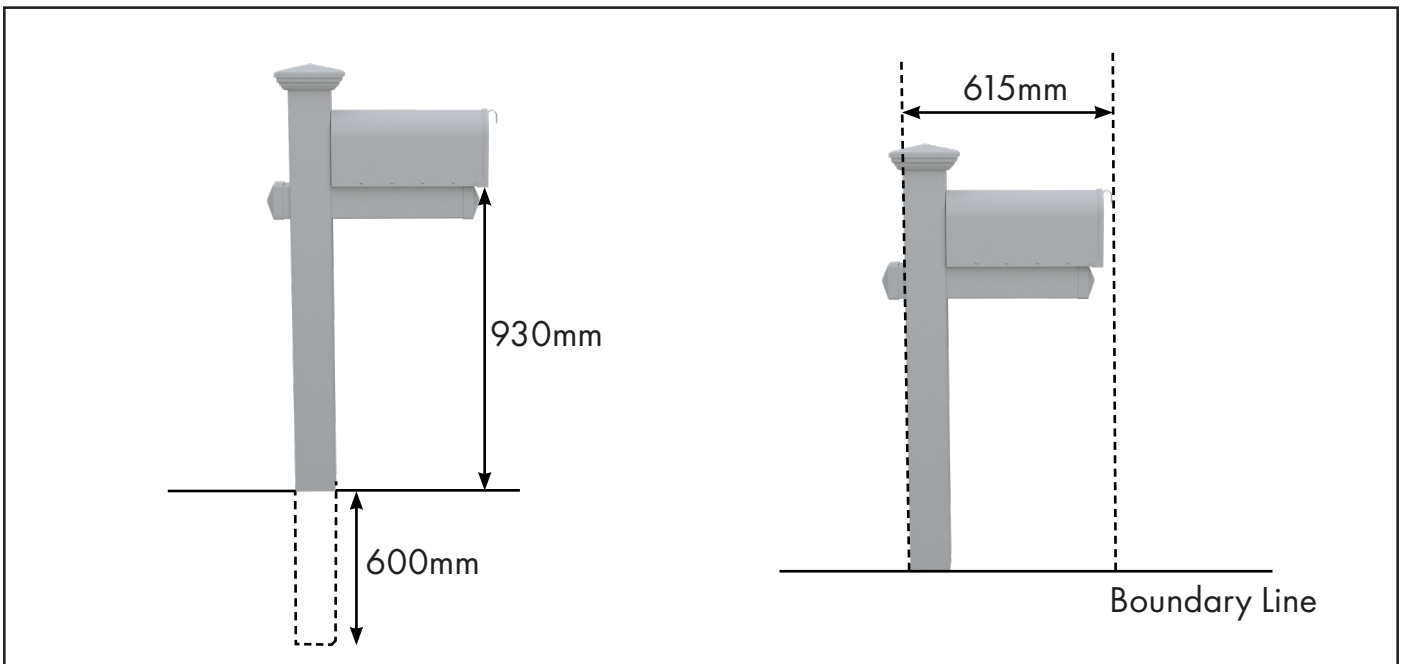


- 4** Position Letter Box on Mounting Board and secure with 4 x screws on each side (pilot holes are not required for this step).



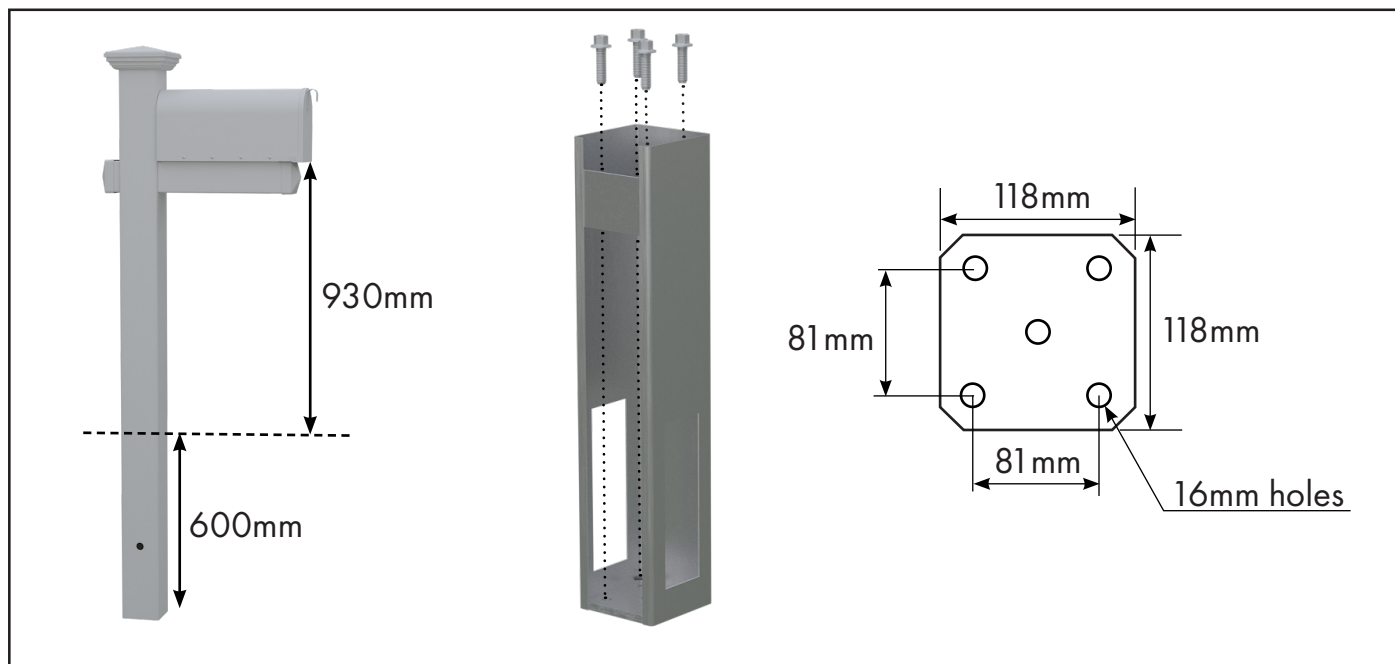
- 5** Install Top Cap and two Side Caps onto assembly. Use silicone as required to secure.

In-Ground/Core Drilled Installations Only



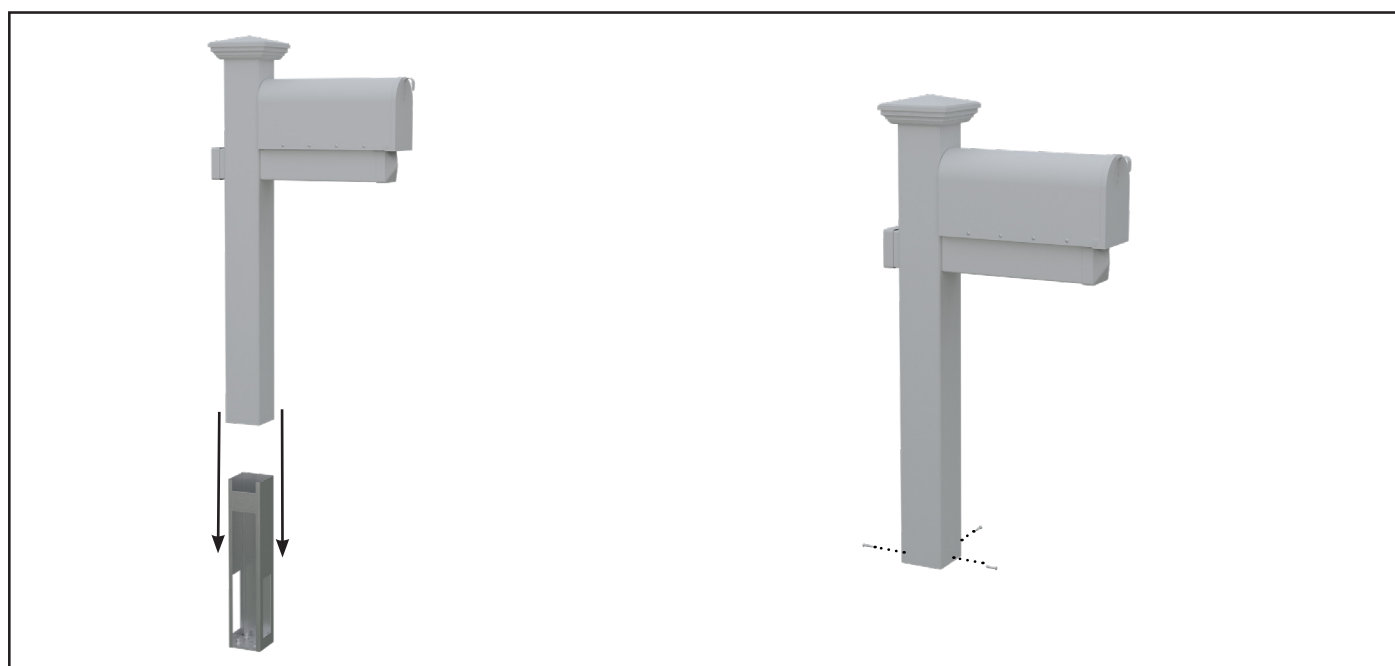
- 6a** Install post into ground 600mm deep (this will allow letter box to sit approx 930mm from ground level). Ensure letter box positioning does not exceed property boundary line.

Base Plated Installations Only



- 6b** Using appropriate circular saw & blade or handsaw, cut off 600mm from bottom of post. Install base plate into desired location on ground/concrete, with attention to finishing position of letter box relative to boundary line (see 6a)

Base Plated Installations Only



- 7** Slide letter box assembly over base plate and, using appropriate fixings (not supplied) secure on the 3 closed sides at bottom of the base plate.

Base Plated Installations Only



- 8** Finish assembly by covering screws with 2 part base plate cover.

